

# CERTIFICATE OF LOCATION OF GOVERNMENT CORNER

EAST QUARTER Corner of Section 10, Township 106, Range 39, 5TH P.M.

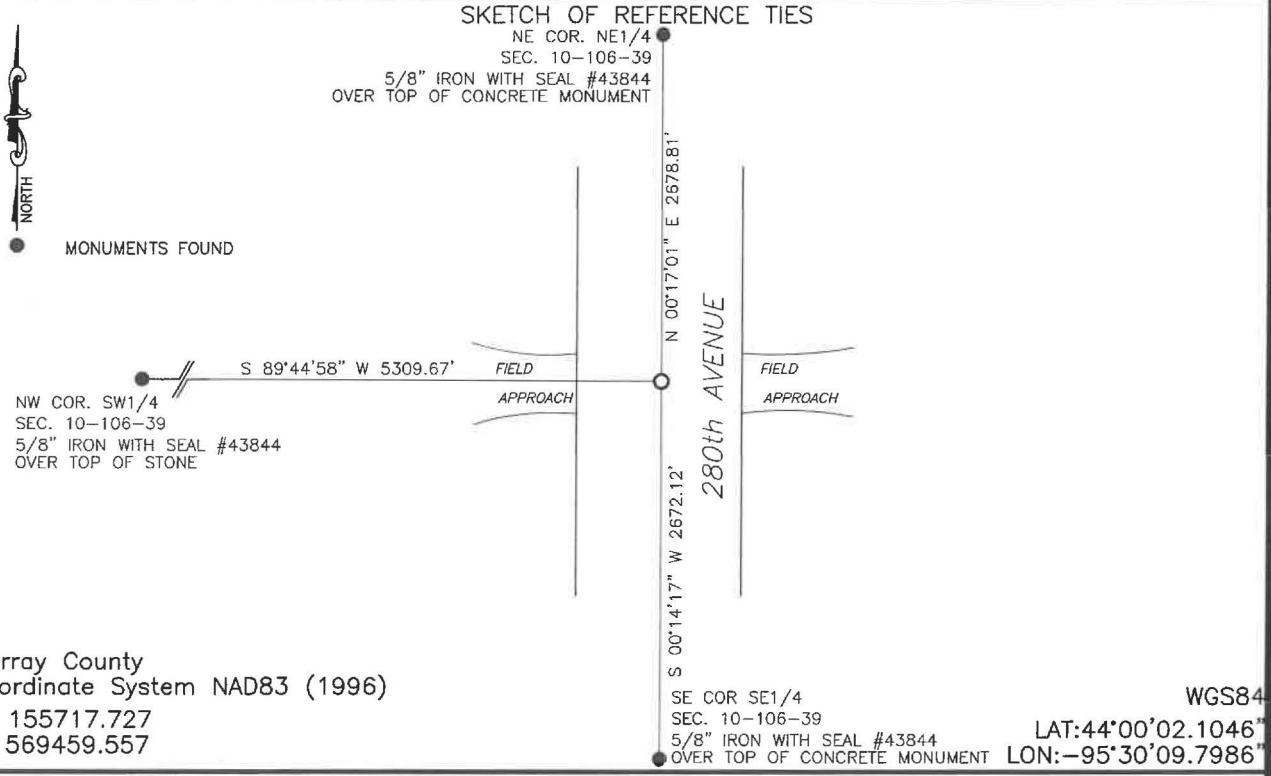
STATE OF MINNESOTA, County of MURRAY

At the corner location shown on the sketch:

On 7/23/2024 found a CONCRETE MONUMENT  
DATE

left monument as found,  lowered monument,  removed monument (explain)

On 1/16/2025 placed a 5/8" iron with seal #43844  
DATE



Murray County  
 Coordinate System NAD83 (1996)  
 N: 155717.727  
 E: 569459.557

Statement of evidence relative to this corner location is on back of page.

I hereby certify that this document and the data contained herein was prepared by me or under my direct supervision.

*Daniel L. Buettel*  
 Daniel L. Buettel  
 License No. 43844

3/12/2025  
 DATE

MAR 13 2025

*Karen Brown*  
 MURRAY COUNTY RECORDER

Statement of Evidence

EAST QUARTER CORNER SECTION 10, T106N, R39W of the 5th P.M.

In September 1858, W.J. Neely surveyed the east township line.

In July of 1861, J.W. Myers surveyed the north, south, and west township lines.

In August of 1861, Wellman & Smoot subdivided the township.

July 5, 1911, county records show a concrete monument.

May 21, 2012, county records show a found 3/4" iron.

On July 23, 2024 Bueltel-Moseng Land Surveying found a 3/4" iron, we removed iron and dug with a backhoe. We found a 8" concrete monument laying on its side, we reset the concrete monument using the coordinate of the 3/4" iron.

Returned on January 16, 2025 and set a 5/8" iron with seal #43844 over top of the concrete monument.